

Bulletin | Danfoss Turbocor Compressors

# Customer Notification

B-CN-442-EN Rev B

April 2, 2026

**SUBJECT: TT/TG Series Compressor Software Configurations Update**

## Purpose

This bulletin has been revised to further elaborate on the improvements included in firmware version 4.5.0, as well as to emphasize that the "Software Configurations with BMCC PNs Rev 2" Excel file has been revised and published to our website. Please be sure to use this latest version and replace any version previously downloaded.

**Changes in this bulletin revision are indicated in underlined and bold text.**

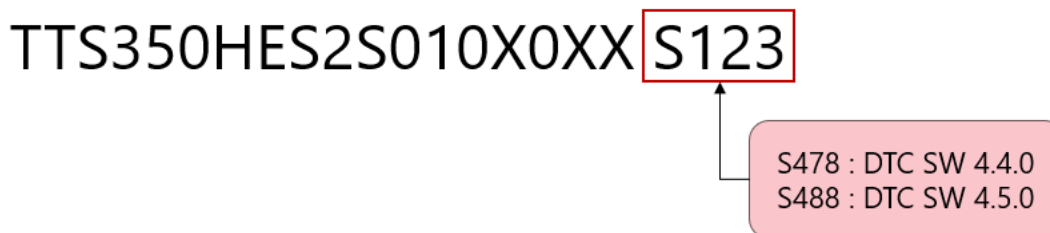
This bulletin is to inform our customers that we are releasing new BMCC software configurations. These new releases, S478 and S488, are available for firmware versions 4.4.0 and 4.5.0, respectively. Effective April 6, 2026, these new configurations will become the newest software option when ordering a new TT/TG Series compressor. Previous configurations will continue to be available.

**Firmware versions 4.4.0 and 4.5.0 are available for the following models: TTS350, TGS310, TTH375, TGH285, TTS450, TGS380.**

Please refer to bulletin B-CN-306 for more information regarding the changes and improvements that have been made in firmware versions 4.4.0.

➤ **B-CN-306 TT Series 4.4.0 Firmware Release Notice**

The compressor Type Code defines the software option via the last four characters as shown in the following example:



**Figure 1 - Type Code**

For more information regarding the overall Turbocor® Variant Configuration public online configurator tool located at [store.danfoss.com](http://store.danfoss.com) and the ordering process, please refer to customer bulletin:

➤ **B-CN-164-EN Nomenclature Update & Variant Configuration**

## Summary

---

This bulletin is intended to inform customers of updates to the configurations for 4.4.0 and newly released 4.5.0 FW.

The maximum speed limit has been adjusted in firmware versions 4.4.0 and 4.5.0 for the following models to ensure that the actual motor speed does not surpass our control limits: TTS350, TGS310, TTS450, TGS380. These adjustments will not affect compressor performance or surge and choke boundaries, as this limit is a safeguard to prevent abnormal compressor operation.

### **4.5.0 Firmware Improvements**

The 4.5.0 firmware includes additional improvements to the control system. These updates improve operational stability, reduce nuisance faults, and ensure reliable operation across varying ambient conditions.

**In firmware version 4.5.0, the Generator Mode Enabled Level has been adjusted from a 15% voltage drop to a 27% voltage drop within 2 ms. These power resiliency firmware improvements also include a lower DC Bus Undervoltage fault limit, a timer delay for the SCR Ripple Voltage fault and an increased SCR Ripple Voltage fault limit** to allow the compressor to tolerate momentary input power phase imbalance or ripple disturbances without triggering an SCR Ripple Voltage Fault and Generator Mode. **These improvements help prevent unnecessary activation of Generator Mode and SCR Ripple Voltage faults while maintaining appropriate system protection.**

Additionally, the Discharge Pressure Sensor Fault has been disabled during Idle and Startup to prevent false fault conditions caused by very low discharge pressure, which can occur in extremely low ambient environments. When the compressor returns to normal operation, the Discharge Pressure Sensor Fault remains fully enabled to ensure proper sensor functionality and continued system protection.

## Action Required

---

Customers are requested to reference the Excel file named "**Software Configurations with BMCC PNs Rev 2**", which has now been added to [turbocoroem.com](http://turbocoroem.com). Authorized users can navigate to [www.turbocoroem.com](http://www.turbocoroem.com) and select "OEM Login." Select "Compressor Software" and then select "Configurations". From there, you can download the excel file. This file will allow customers to quickly determine the corresponding BMCC part numbers applicable to the new firmware versions to ensure proper identification and implementation.

## Need Assistance

---

For further questions, please contact your Key Account Manager or email us at [dtcapplications@danfoss.com](mailto:dtcapplications@danfoss.com).